



ARINC 665 Media Set Builder

Media Set Builder SDK with UI & Command Line Interfaces

AIT's ARINC 665 Media Set Builder SDK is a software suite of tools that provides support for the creation and verification of ARINC 665 media sets (MSPs) and loadable software parts (LSPs). The A665 SDK supports ARINC 665-1, -2, & -3. A GUI application is provided to support users wishing to create MSPs and LSPs from a MS Windows application. The A665 SDK also includes a command line application which can be used to build MSPs and LSPs. The command line can be integrated into software build tools and scripts to make the generation of loadable ARINC 665 software parts part of the avionics software build processes.

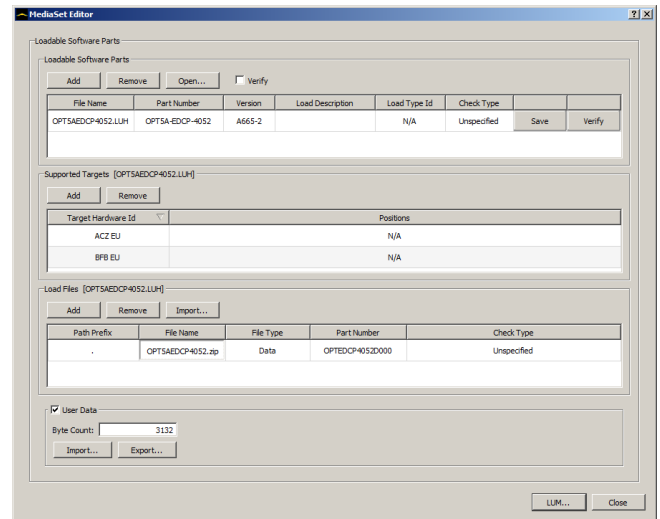
MEDIA SET BUILDER APPLICATION

The ARINC 665 Media Set Builder application allows the user to create, view, edit, and verify MSPs and LSPs. Using the application, users can:

- Specify the LSP Part Number(s)
- Edit the list of supported target hardware IDs
- Select the set of Data and Support files to compose the LSP
- Generate the LSP/MSP (e.g. generate the ARINC 665 .LUH and .LUM files)
- Check and Verify all ARINC 665 file and LSP CRCs
- Combine multiple LSPs into an MSP

SCRIPTED COMMAND LINE BUILDER

The ARINC 665 Media Set Builder SDK includes a command line builder which can be used to script/batch the building of ARINC 665 compliant LSPs and MSPs. The command line takes in a user defined specification file which identifies the MSP/LSP support and data files and the part numbers assigned to the MSP/LSP. With this input, it builds packages the MSP/LSP which includes generating the ARINC 665 .LUH and .LUM files. The command line builder is ideal for integrating the generation of ARINC 665 media into automated software build operations.



ARINC 665 Media Set Builder Application UI

Key Features

- Supports ARINC 665-1, 665-2, & 665-3
- Generates ARINC 665 *.LUH and *.LUM files
- Can be used to verify existing ARINC 665 LSPs and MSPs
- GUI Application provided for intuitive, easy to use build and verification of MSP/LSP
- Command line application provided for batched and scriptable building of MSP/LSP
- Available for MS Windows (7/8/10) & Linux

Ordering Information

PN: A665-SDK-WIN

ARINC 665 media set builder kit. Includes media set builder GUI application and command line media set builder. For use on MS Windows (7/8/10).

PN: A665A-SDK-LIN

ARINC 665 media set builder kit for Linux. Includes command line media set builder.