



F-SIM-LDR-615A

ARINC-615A Data Loader Kit

AIT's F-SIM-LDR-615A, is an ARINC-615A Data Loader development kit that provides a package of software tools supporting ARINC-615A data load operations over both standard Ethernet LANs and ARINC-664/AFDX networks using AIT's family of ARINC 664 interface modules. The F-SIM-LDR-615A Graphical User Interface (GUI) provides intuitive and easy to use control of data loader operations. A command line interface (CLI) dataloader is also provided. Additionally, the an ARINC 665 Media Set Editor is included.

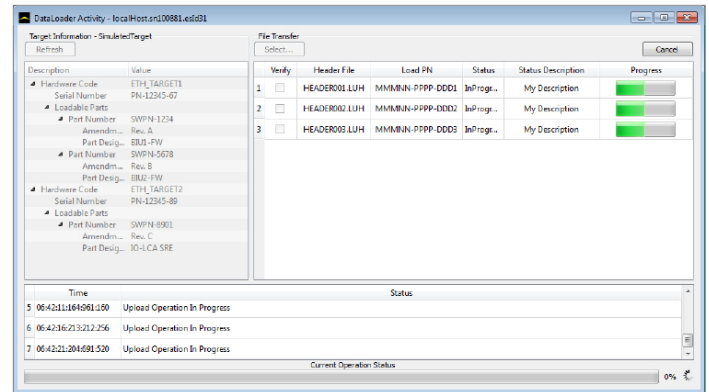
Key Features

- ARINC 615A-1, 615A-2, and 615A-3 FIND, Information, Upload, and Download operations supported Supports 615A (-1, -2, & -3) Data Load operations over Ethernet & ARINC 664 networks
- Create and verify ARINC 665-1, 665-2, and 665-3 Media Sets
- Intuitive, easy to use GUI
- Command line A615A data load and A665 media set operations
- Windows XP, Windows 7/8/10, and Linux host systems supported
- Supports multiple, simultaneous load operations

Overview

AIT's F-SIM-LDR-615A does not require a proprietary computing platform, for standard Ethernet LAN operations it can simply be installed on any Windows or Linux PC with a LAN interface. For A615A operations over ARINC-664/AFDX, any desktop PC hosting AIT's ARINC-664 PMC, XMC, PCI, PXI Express, or PCI Express end system modules can be used.

F-SIM-LDR-615A has been verified ARINC-615A compliant and is ideal for use loading A380, B787, and B747-B target LRUs. The GUI supports shop and bench-top loader applications.



SIMPLE, INTUITIVE USER INTERFACE

The F-SIM-LDR-615A GUI is integrated into AIT's Flight Simulyzer databus analyzer software tool. With the F-SIM-LDR-615A GUI users can easily configure and execute A615A data loader operations within the same user interface used for ARINC-664/AFDX operations.

SOFTWARE ONLY SOLUTION

For standard data load operations over the Ethernet LAN, the F-SIM-LDR-615A provides a software only ARINC-615A solution. The software can be loaded onto any desktop PC or laptop running Windows or Linux to provide a complete data loader solution. All operations utilize the standard LAN interface of the host.

SCRIPT MULTIPLE OPERATIONS

All A615A data load and A665 media operations are also supported at the command line allowing multiple operations to be scripted for easy execution of repetitive operations.

ORDERING INFORMATION

F-SIM-LDR-WIN

F-SIM-LDR-A615A Development Kit for Windows

F-SIM-LDR-615A-Lin

F-SIM-LDR-A615A Development Kit for Linux (CentOS, Ubuntu, Debian)