

## Meinberg Radio Clocks

Lange Wand 9

31812 Bad Pyrmont, Germany

Phone: +49 (5281) 9309-0

Fax: +49 (5281) 9309-30

<https://www.meinbergglobal.com>

[info@meinberg.de](mailto:info@meinberg.de)

## MPS v2: NTP / PTP Simulation Software

The simulation software offers the possibility to simulate time synchronization devices, such as NTP Server and Clients or PTP Grandmaster and Slaves in a network.

The MPS allows you to test your existing network infrastructure by simulating hundreds or thousands of devices. You will also have the possibility to test your own NTP- or PTP implementation on standard compliant behavior, by examining its interoperability with a simulated device.

### Key Features

- Simulation of network nodes with own MAC and IP addresses
- Dynamic address resolution via ARP (IPv4) or NDP (IPv6)
- VLAN simulation with configurable ID and priority
- Simulation control from the same or from a remote system
- Download Demo Version and Updates MPS v2
- Simulation of NTP servers and / or clients Simulation of PTP unicast / multicast masters and / or slaves  
Simulation of large client groups to produce high loads Simulation of failures in configurable intervals and variable length
- Extensive configuration options for each simulated device Saving / Loading configurations for repeated execution of a test
- Detailed analysis of the simulation by statistical recording
- Use different network interfaces for load sharing
- Simulation of date and leap second

## Description

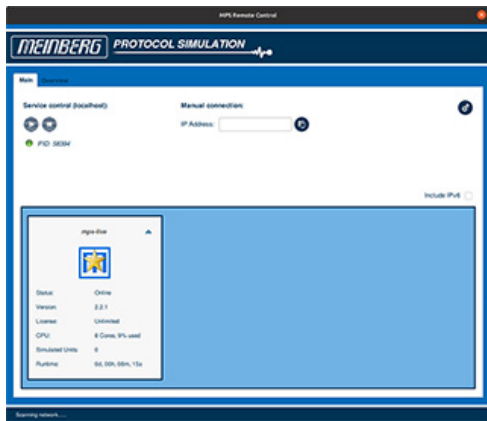
The delivery contains two USB sticks: One of the USB sticks can be used to boot a Live-Linux-System, on which the simulation service is started automatically after successful booting procedure, on any computer or server. The simulation can now be controlled either from the same system or from a remote computer. The second USB stick provides a license key and has to be inserted into the simulation system during the simulation, to have access to the complete functionality of the software. By booting the Live-System all data on your computer or server will not be changed, which means that your hardware is only transformed into a flexible and functional NTP-/PTP-simulator for the duration of the simulation and can be used as before after the simulation.

The software allows you to create a few network nodes for a basic interoperability test of your implementation, as well as performance tests of your network by a mass simulation of devices, without the need of installing these devices for the test.



### Boot menu

In the boot menu of the USB Live-System you may choose between desktop mode and terminal mode. If you want to control the simulation from the same computer or server, the desktop mode is recommended. For all other purposes the terminal mode is sufficient. If no mode was selected the system will automatically start in the desktop mode, after a short while. This is to make sure that the simulation service is started automatically and is ready for remote control, even without user identification



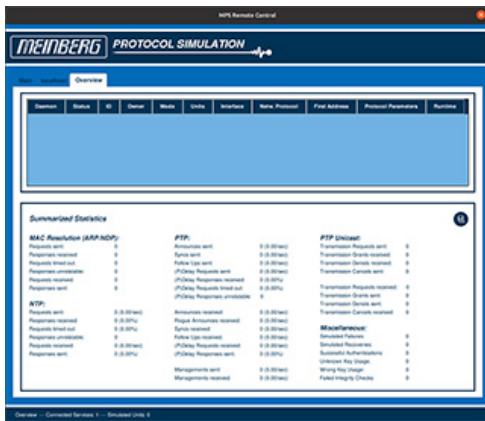
### Main tab

In the main tab of the Remote Control Interface you will find an overview of the current simulation services in the network. If you possess several licenses, you can simultaneously control several simulation services from the same computer. If one of the services does not appear automatically, i.g. because it is in a separate subnet, you can manually establish a direct connection by using the text field "Manual Remote Connection".



### Connection tab

After having successfully established a connection to a simulation service you can control the simulation via the connection tab. Simulation groups can be created, edited or deleted and started or stopped individually. Additionally you can save and look at simulation statistics.



### Overview tab

The overview tab offers an overview of all simulation groups, current simulations and their statistics, that are created on the currently connected simulation services.

## Characteristics

### Operating System

64 bit Linux Mint Live system (included in scope of delivery).  
Installation also possible on other Linux distributions.

### Minimum system requirements:

- \* USB bootable simulation computer
- \* 1.0 GHz CPU (dual core)
- \* 1 GB RAM
- \* At least 1 compatible network adapter
- \* Compatible Graphics Adapter

### Software License

2 year License (24 months) and

- \* Software Starter Kit
- \* Including support and updates

Lifetime License available upon request

---

## Supported Modes

- \* NTP Clients (IPv4, IPv6)
- \* NTP Servers (IPv4, IPv6)
- \* PTPv1
  
- \* Multicast Masters (IPv4)
- \* Multicast Slaves (IPv4)
  
- \* PTP v2 / PTP v2.1 (IEEE 1588-2008)
  
- \* Multicast Slaves (IEEE802.1 / Ethernet Layer 2, IPv4, IPv6)
- \* Multicast Masters (IEEE802.1 / Ethernet Layer 2, IPv4, IPv6)
- \* Multicast Auto (IEEE802.1 / Ethernet Layer 2, IPv4, IPv6)
- \* Unicast Slaves (IEEE802.1 / Ethernet Layer 2, IPv4, IPv6)
- \* Unicast Masters (IEEE802.1 / Ethernet Layer 2, IPv4, IPv6)
- \* Unicast Controllers (IEEE802.1 / Ethernet Layer 2, IPv4, IPv6)
  
- \* Alternate PTP options:
  - \* Telecom (G.8265.1, G.8275.1, G.8275.2) / Power (C37.238) / IEEE 802.1AS / SMPTE Profile
  - \* One-Step/Two-Step Clock Mechanism
  - \* Unicast Load Balancing
  - \* E2E und P2P Delay Mechanismus (Hybrid Mode)
  - \* Different Sync/Announce/Delay Request Intervals
  - \* Symmetric HMAC-SHA256 authentication

---

**Configuration****Main Configuration**

- \* Number of simulated devices
- \* Selection of the network adapter
- \* MAC-address resolution (cacheTimeout, group- / appliances manner)
- \* Network protocol (IEEE802.1 Layer 2, IPv4, IPv6)
- \* Simulated MAC and IP address, subnet mask, gateway
- \* DSCP/Per-Hop-Behaviour
- \* TTL/Hop Limit

**Special Configuration**

- \* VLAN Simulation (Priority/ID)
- \* Failure simulation (Time Between Failures & Time To Recover)
- \* Date and leap seconds simulation

**NTP Configuration**

- \* **Server:**
  - Stratum
  - Precision
  - Root Delay
  - Root Dispersion
  - Reference ID
  - Source Port (Standard/Custom)

- \* **NTP Authentication**  
(MD5, SHA1, AES128CMAC)

- \* **Client:**
    - Server IP-Address
    - Polling Interval (Custom/Fast Sync/Standard, 1000/s)
-

## Manual

The English manual is available as a PDF file: [1][Download \(PDF\)](https://www.meinbergglobal.com/download/docs/manuals/english/mps_v2.pdf)

## Links:

[1] [https://www.meinbergglobal.com/download/docs/manuals/english/mps\\_v2.pdf](https://www.meinbergglobal.com/download/docs/manuals/english/mps_v2.pdf)